

The Russell Cabins at *The Ridge*



BIRD'S EYE
BILL INGRAM



Featuring

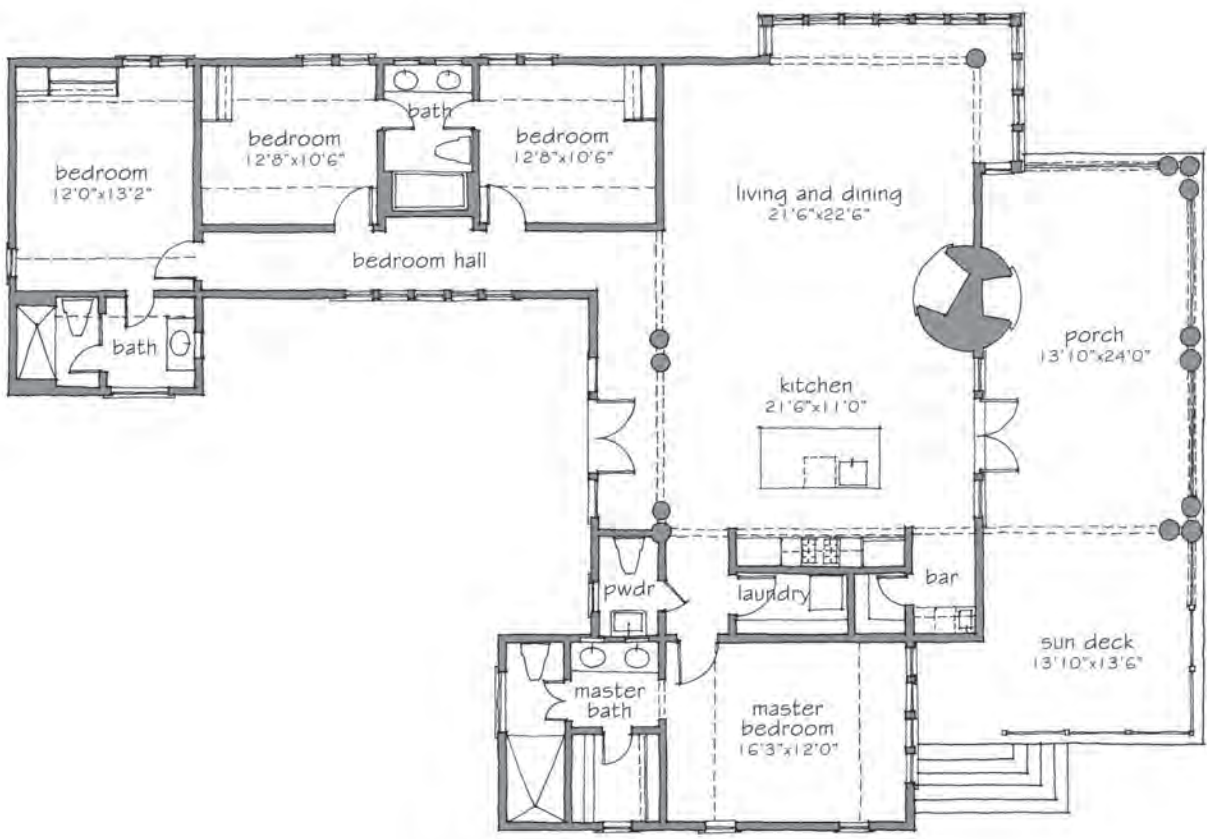
- Four bedrooms and three and one-half bathrooms on one level
- Master and guest bedroom suites offer optimal privacy
- Spacious living-dining-kitchen-wet bar floorplan
- Open kitchen designed to seamlessly blend cooking with entertaining
- Masterfully designed living room windows provide bird's eye views of Lake Martin
- Handsomely crafted round, double-sided stone fireplace
- Expansive covered porch enhances outdoor living accompanied by the open sun deck

Designed by: Bill Ingram
Builder: Classic Homes





BIRD'S EYE
BILL INGRAM



BIRD'S EYE ~ BILL INGRAM
 2,090 sq. ft. conditioned ~ 616 sq. ft. porches & decks
 all square footages and dimensions are approximate