

Coming September 2019

Birmingham Home & Garden

is breaking new ground at Russell Lands On Lake Martin.

Announcing Our 2019 Inspiration Home

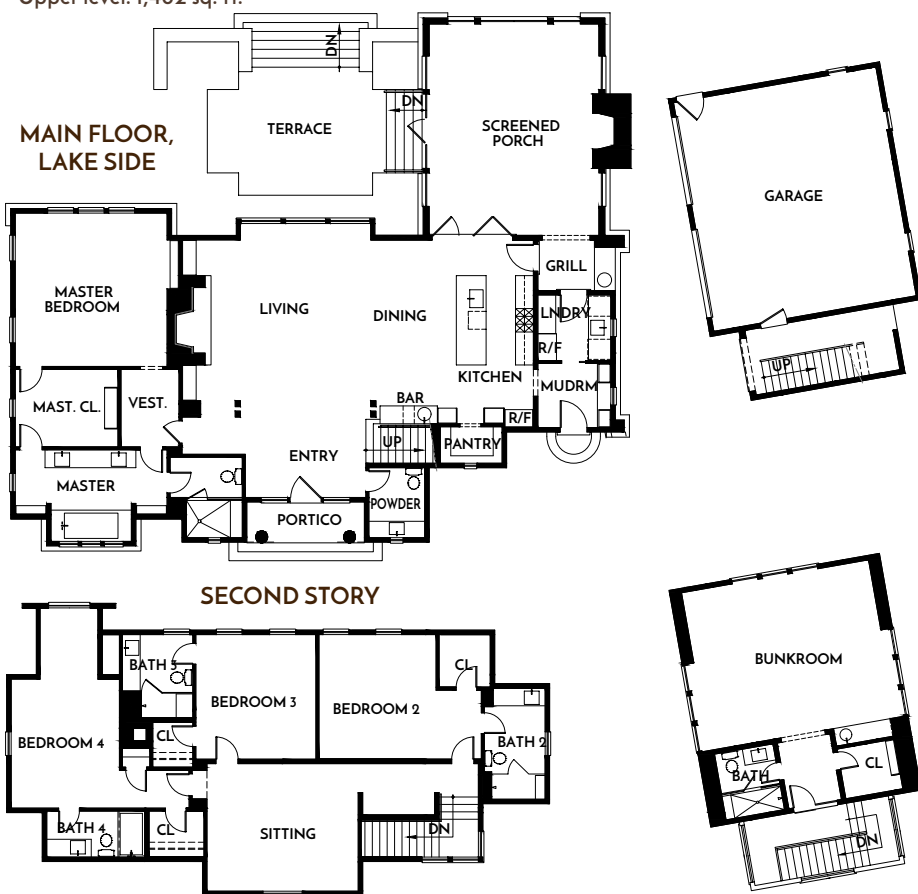


Square Footage:

Main level conditioned: 2,035 sq. ft.

Main level porches: 608 sq. ft.

Upper level: 1,482 sq. ft.



Welcome to A Haven at The Willows

Russell Lands On Lake Martin is the largest developer on Alabama's Lake Martin, a more-than-41,000-acre lake surrounded by 25,000 acres of forest located near Alexander City, Alabama. Comprised of several distinct neighborhoods situated along nearly 300 miles of shoreline—along with Willow Point Golf & Country Club, four world-class marinas, and the Russell Crossroads town center that includes Catherine's Market, the award-winning SpringHouse restaurant, and stables—Russell Lands On Lake Martin is the playground of choice for many Birmingham (and beyond!) residents.

The 2019 Inspiration Home, located at The Willows, a new Russell Lands On Lake Martin neighborhood, is already under way. Situated on a gently sloping lot, the home will exhibit all the charms of lake house style and showcase the best of lakefront living.

Meet The Team

Builder: Classic Homes

Classic Homes is a member of the Russell Lands, Inc., family of businesses that specializes in building lake homes in Russell Lands On Lake Martin neighborhoods. Led by its president, Chad Calhoun, Classic Homes utilizes the talents and abilities of the entire Russell Lands On Lake Martin team to create memory-making lake homes. Every detail of a home and its site—from roads to waterfront features to kitchen layout, rustic finishes, and natural landscapes—is carefully considered and executed by the Classic Homes team. Classic Homes neighborhoods include Nichols Cove, Rose Point, Glynmere, Ridge Run, and the Russell Cabins at The Ridge. Other Classic Homes projects include The Ridge Club, Catherine's Market and The Discovery Center, as well as SpringHouse restaurant.

Architect: Pfeffer Torode Architecture, Scott Torode

Pfeffer Torode Architecture is dedicated to providing thoughtful design solutions responding to project-specific aspirations. The firm maintains a varied portfolio including residential, commercial, and community projects, all bound by a commitment to quality design and dedicated service. The Pfeffer Torode design team represents a group of talented professionals with an extensive, though varied, background within the architectural profession.

Charity Partner: Children's Harbor

In service since 1989, Children's Harbor provides children with serious illnesses, along with their families, a place to have fun and relax while also receiving no-cost services at both the Family Center located at the Benjamin Russell Hospital for Children in Birmingham, Alabama, and at the Lake Martin retreat facility in Alexander City, Alabama.

PLAN HIGHLIGHTS

- Open floor plan uniting kitchen, living, and dining areas
- Master suite on main with abundant lake views
- Three bedrooms upstairs, each with a private bath
- Screened porch and terrace overlooking a gently sloping lot and panoramic lake views
- Shiplap siding and natural stone materials
- A stand-alone garage with bunkroom and bath above accessed by a private entrance